

Med Campus Vienna

Project Competition 2018

2nd Stage

“1 implant, 5 building volumes, 6 courtyards”

Schenker

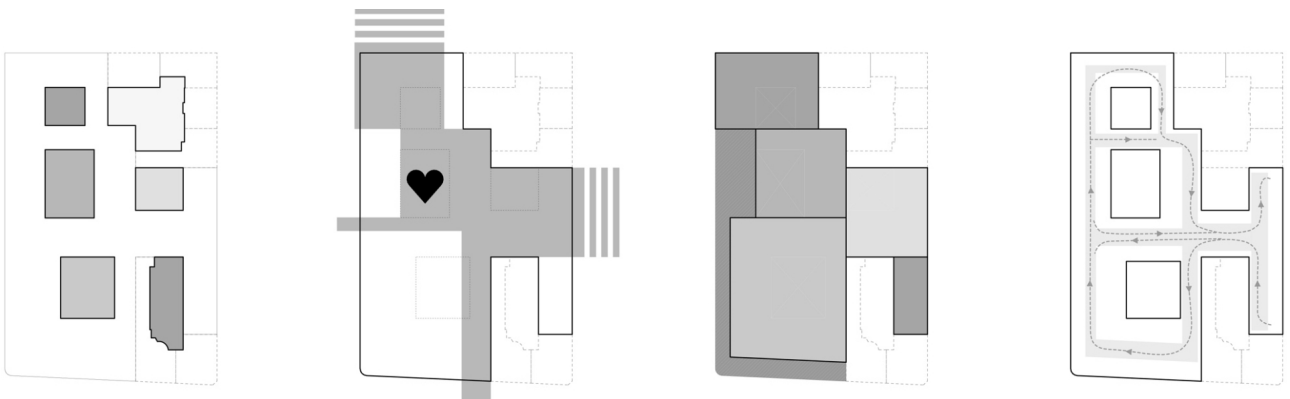


“Deconstruction and extension: five intertwined building volumes as precise implants within the historic perimeter – integrated and permeable towards the Vienna.”

Weber



“A Rue Intérieur guides throughout the building ensemble, connecting a generous and light flooded continuum of foyer, assembly hall and mensa – the forecourts offer a prelude to the new quarter!”

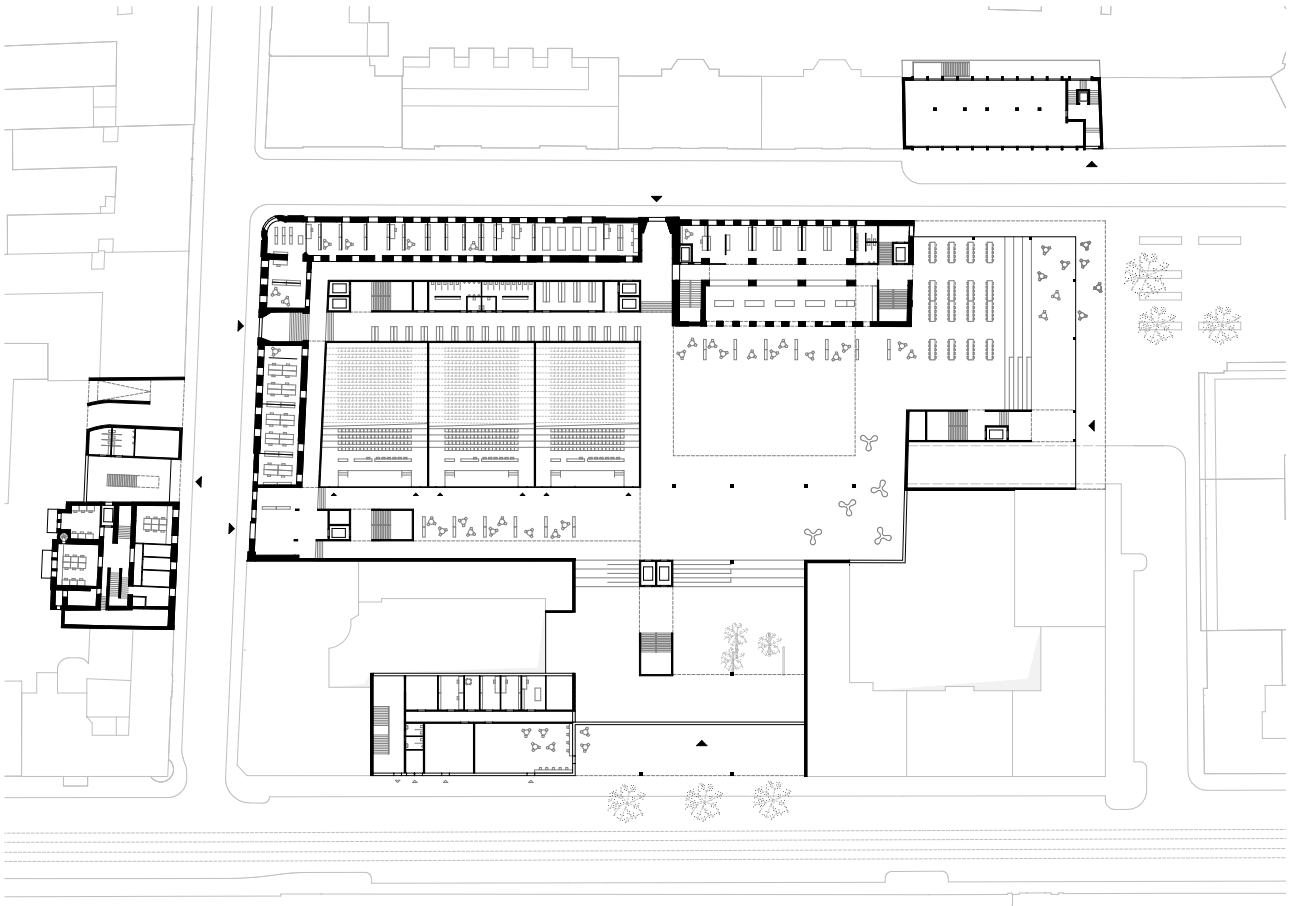




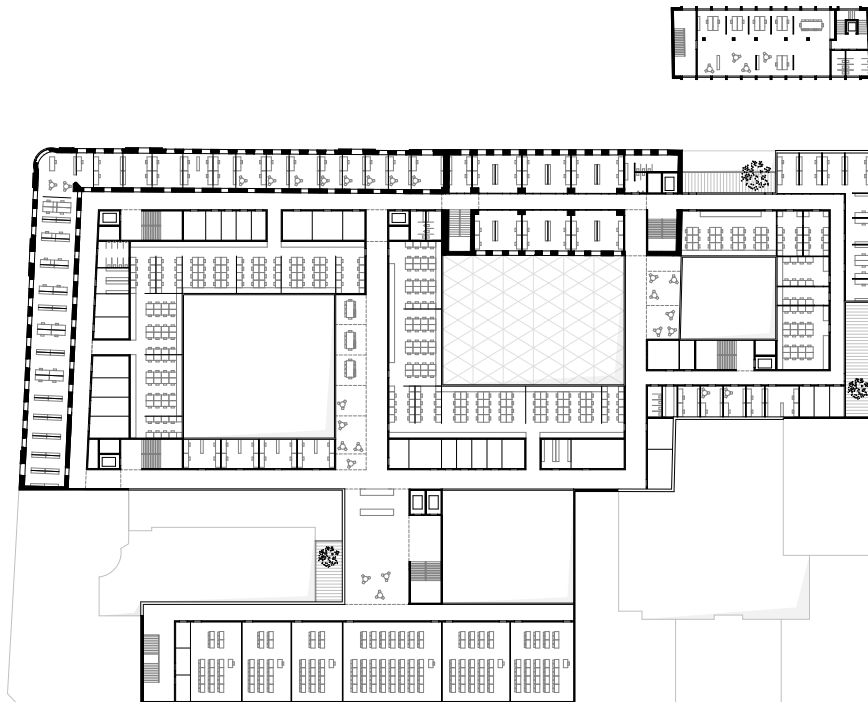
“Intervening within the core of the old perimeter block offers space for the new programme which is comprised of different courtyards and exciting visual connections: learning yard, relaxation yard, assembly hall and the grand atrium for everyone – meeting space and heart of the complex.”

Salvi

Schenker



Weber

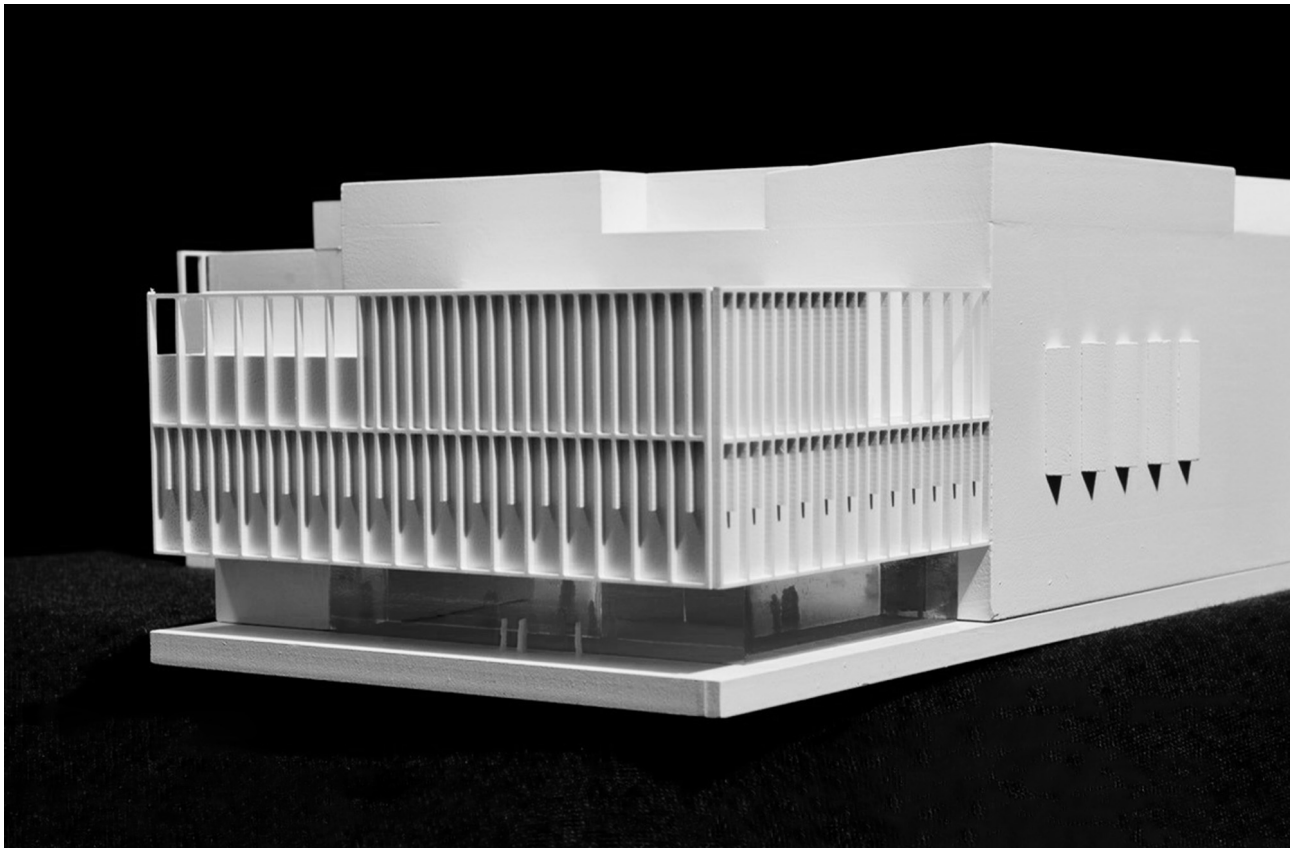




The clear rhythm of the façade playfully shows the various programmes behind. The interior of the building essembles an almost column-free space, which offers high flexibility; an important quality for the ever changing ideas about how to use the space within the university. The complex is based on a continuously orthogonal structure with a 1.2 meters wide module grid. The ceiling overstretch the length of the wing through joists in cross direction in order to guarantee the biggest possible coherent free space underneath – flexibility for all future activities.

“A new address for the Medical Campus Vienna! The façade is self-confident, clear and calm – still it contains a careful gesture towards the old neighboring existing buildings.”





P R O J E C T D E T A I L S

- Commission Type:
open, two-stage general planner
competition, general planning
- Client:
Bundesimmobiliengesellschaft
- Location:
Vienna, AT
- Competition:
2018
- Status:
Wettbewerb
- GFA:
60 230 m²
- Building Costs:
300 M EUR
- Energy Efficiency:
Passivhausstandard
- Team:
Fabian, Bartl, Michael Salvi,
Andres Schenker, Rostislav
Stoklásek, Tereza Tepla,
Kristýna Trojanová, Zsófia Varga,
Thomas Weber

C O O P E R A T I O N

- Laboratory Planning:
Limet Consulting
- Statics:
Gmeiner Haferl Bauingenieure
- Building Physics:
IBO - Österreichisches Institut
für Bauen und Ökologie
- Building Services Engineering:
ZFG Projekte GmbH
- Fire Safety:
IMS Brandschutz
- Landscape Architecture:
DnD Landschaftsplanung
- Visualization:
Janusch
- Model Building:
Modellbauwerkstatt Gerhard Stocker