

# Absam Primary School

Project Competition 2013

1<sup>st</sup> Prize, Realization 2014 – 2016

“Dialogue with the Alpine Landscape”

Schenker



“With a volume that matches the modest scale of the village, the new building creates a protected and inviting schoolyard in combination with the historic primary school.”

Weber





“There wasn’t much space for the new building in the community of Absam. This led to the architects’ decision to situate the sports hall underground.”



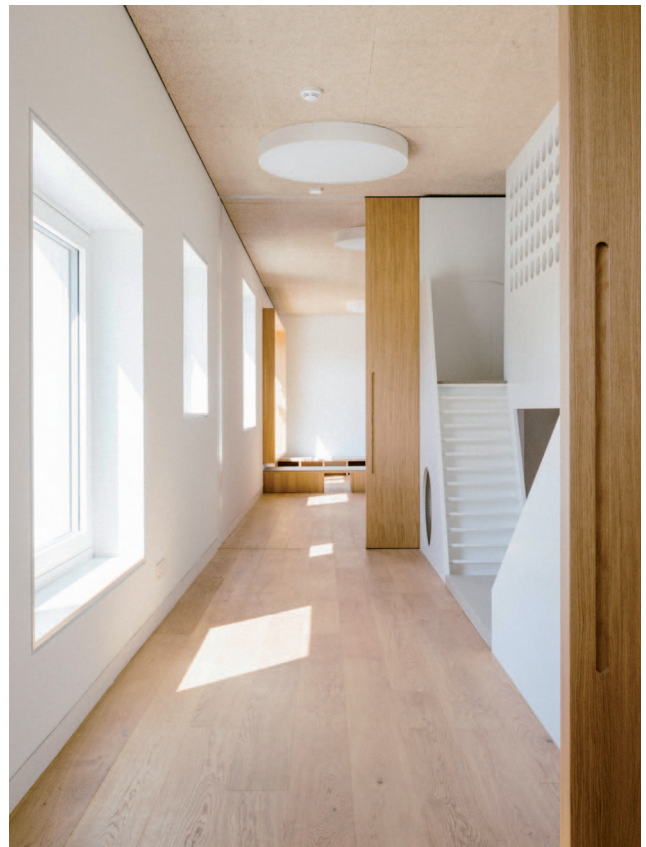


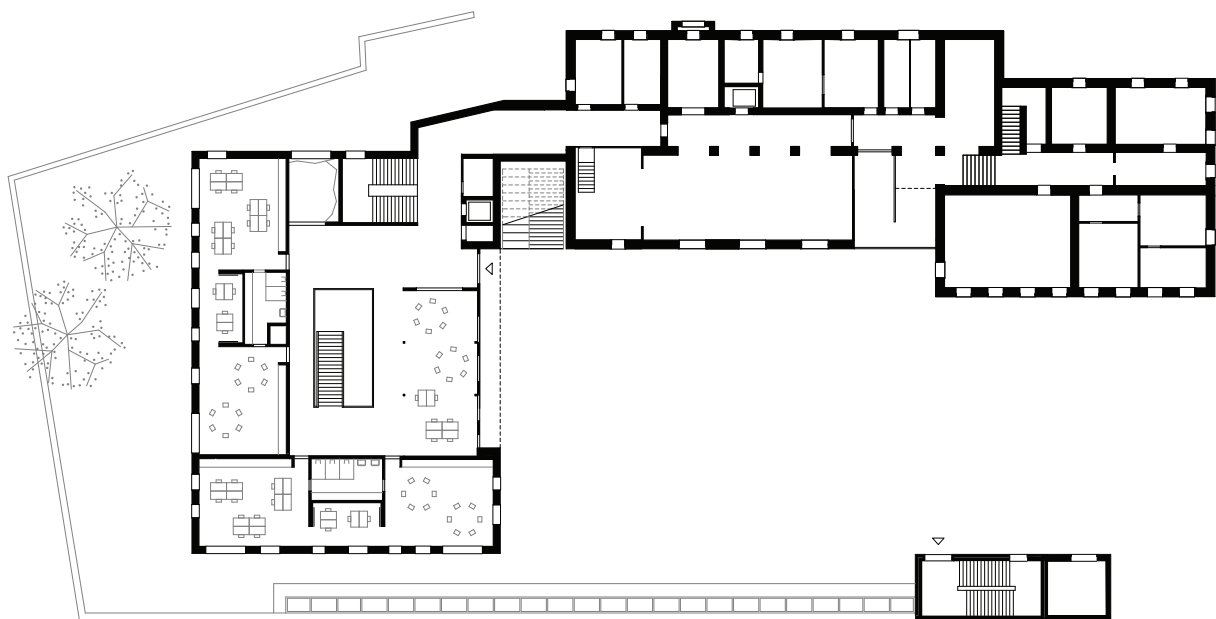
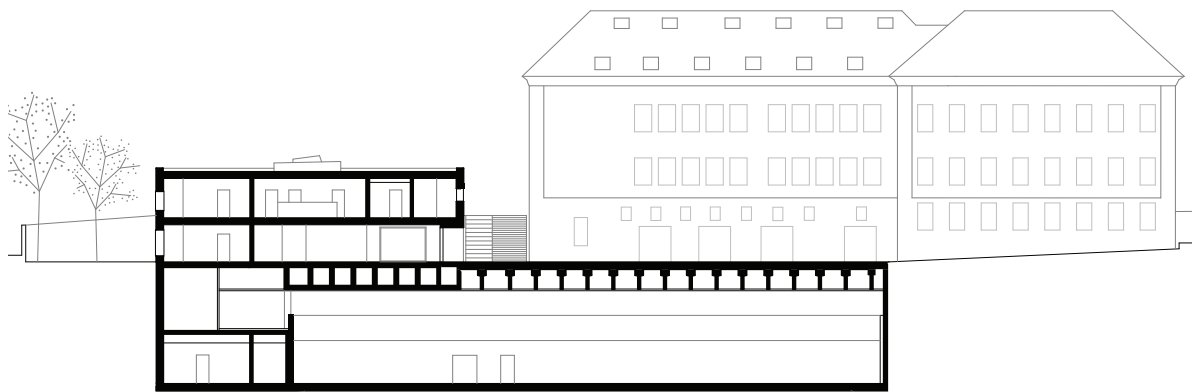
“A wide stairway with a wrap-around gallery and umbrella-like skylight cone for warm artificial and daylight forms the strong, communicative nucleus of the kindergarten.”





“A playful learning landscape at a child’s scale – warmth and comfort.”







Salvi



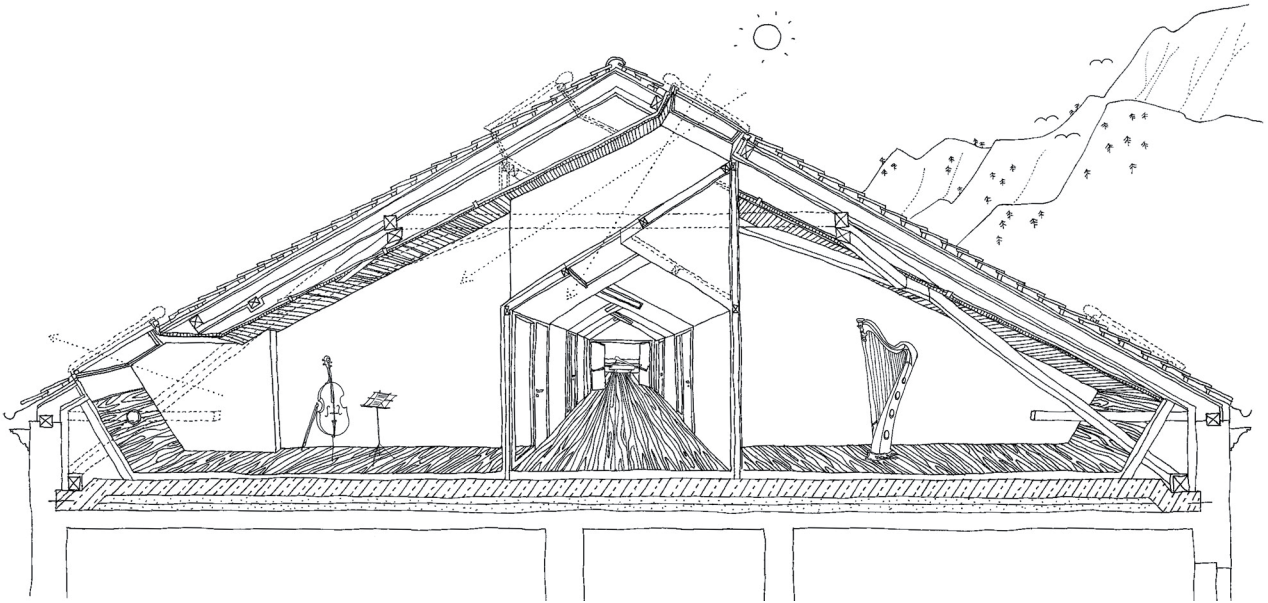
Weber

“The raw haptics of exposed concrete in the underground gymnasium emphasize a subterranean, mineral, and cavernous quality.”

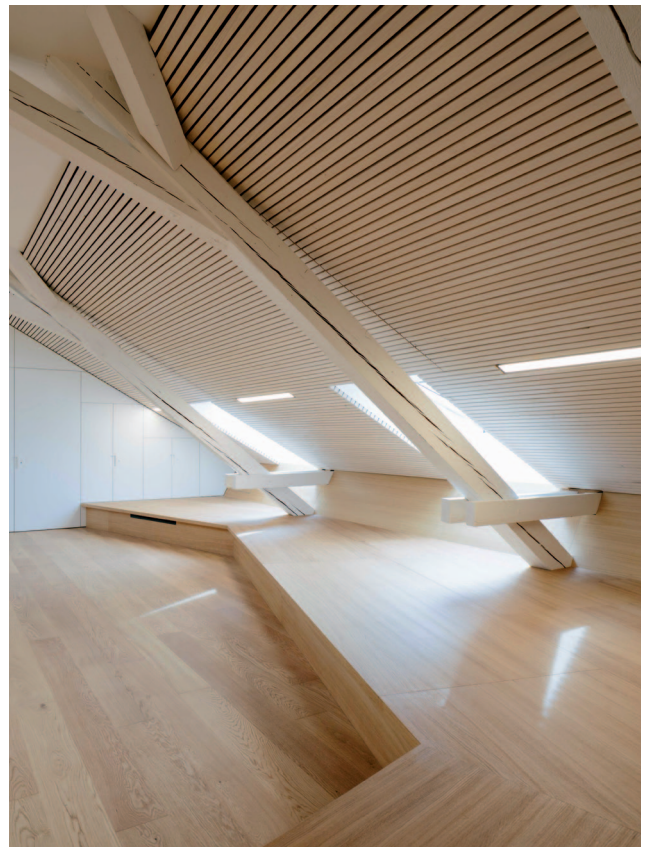
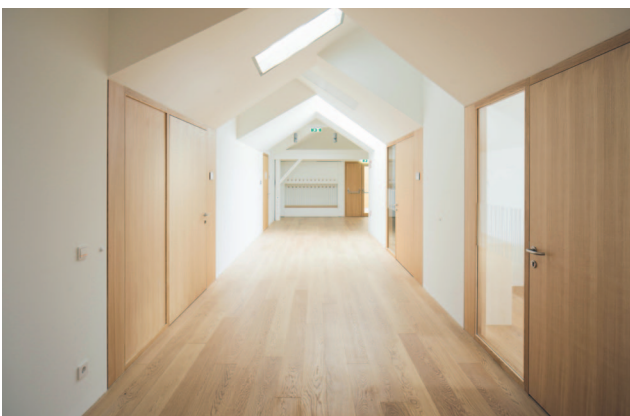
Schenker







“The design idea for the music school in the roof of the old primary school was inspired by the existing roof construction.”





## PROJECT DETAILS

- Commission Type:  
EU-wide, open competition,  
general planning
- Award:  
Competition, 1<sup>st</sup> Prize  
Award for Architecture and  
Sustainability Austria, Nomination
- Client:  
Gemeinde Absam  
Immobilien GesmbH & Co KG
- Location:  
Absam, AT
- Competition:  
2013
- Realization:  
2014-2016 (18 month)
- GFA:  
Total: 4090 m<sup>2</sup>  
Music school: 548 m<sup>2</sup>  
Kindergarten: 1.261 m<sup>2</sup> (EG + OG)  
Triple gymnasium: 2.280 m<sup>2</sup>
- Building Costs:  
9,0 M EUR
- Energy Efficiency:  
Passive House Standard
- Team:  
Bettina Doser, Sophie Gerg, Teresa  
de Miguel, Thomas Morgner, Hans  
Reumann, Barbara Roller, Tiago  
Santana, Michael Salvi, Andres  
Schenker, Verena Theil, Tina  
Tobisch, Katalin Tóth, Rowena  
Ullrich, Thomas Weber

## COOPERATION

- Statics:  
Merz Kley Partner
- Building Physics:  
IBO - Österreichisches Institut für  
Bauen und Ökologie
- Construction Management and Costs:  
Die Bauleiter
- Building Services Engineering:  
Moser + Partner Ingenieurbüro
- Lighting Design:  
Designbüro Christian Polderer
- Landschaftsplanung:  
DnD Landschaftsplanung
- Photography:  
Bengt Stiller