

Salvi

Sillblock Housing Estate Innsbruck

Project Competition 2011
1st Prize, Realization 2012 – 2014

“Terraced Landscape around the Linden Trees”

Schenker

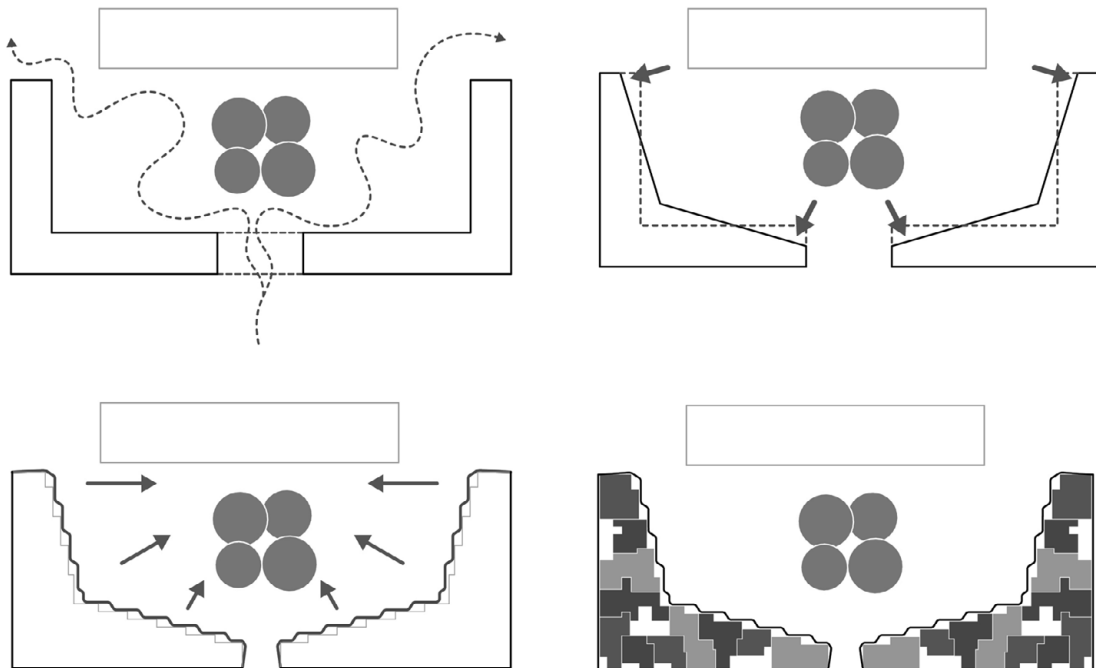


“Hard shell – soft core: The focus of the design is placed on the clear separation between the street and courtyard spaces.”

Weber

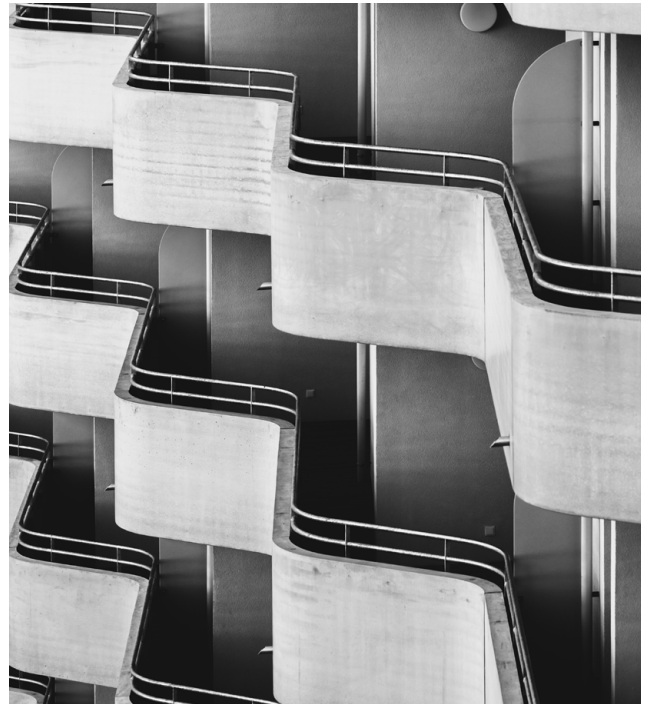


“The building accumulates in layers around the residential units out to the urban space, creating an overall volume with depth and multifaceted spatial qualities.”





On the street side the U-formed block integrates inconspicuously into the urban fabric, while the tapered inner face of the two-segment structure delineates a new, attractive courtyard around the existing linden trees.





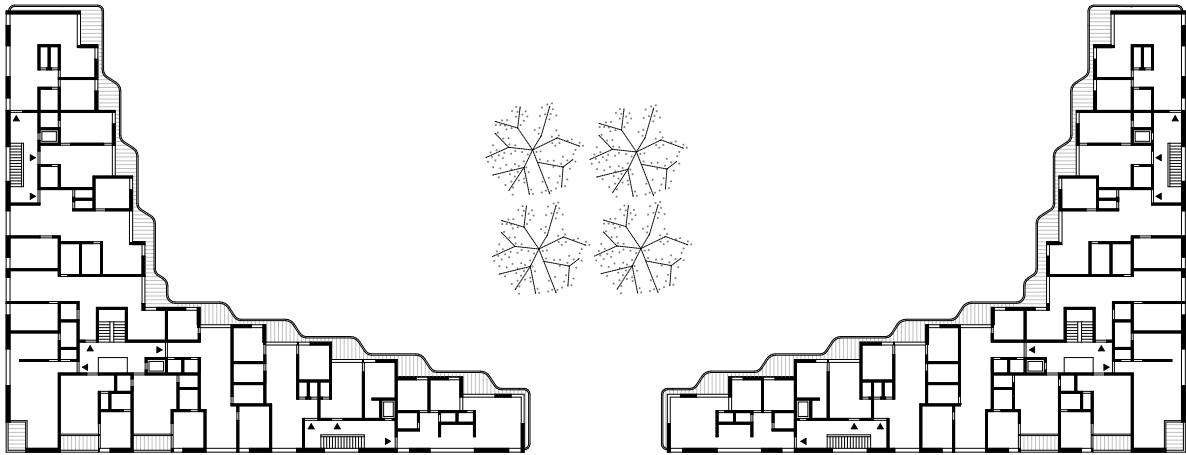
“The traditional urban block structure of 20th-century housing was to be continued on the property in the former slaughterhouse district in Innsbruck.”





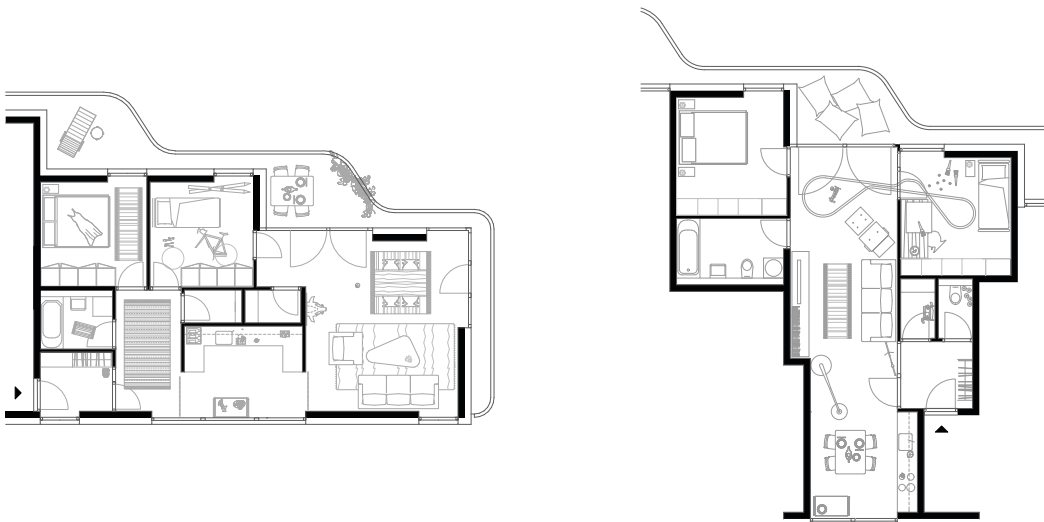
“Four old linden trees were cautiously integrated
in the new scheme.”





Schenker

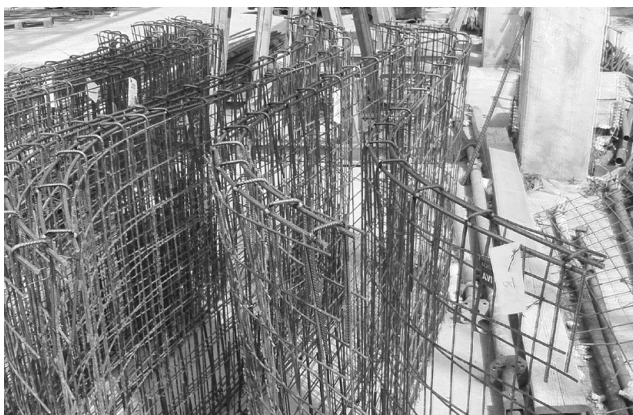
“The unique quality of this residential building lies in the diversity and flexibility of the floor plans.”



Weber



“Materiality, form, and color are used to create a sense of identity or where they articulate functional intentions.”



PROJECT DETAILS

- Commission Type:
EU-wide, open competition
- Award:
Competition, 1st Prize
Best Architects in Gold, 2016
- Client:
Innsbrucker Immobilien
- Location:
Innsbruck, AT
- Competition:
2010
- Realization:
2012-2014
- GFA:
16.000 m²
- Building Costs:
17,6 M EUR
- Energy Efficiency:
Passive House, 9kWh/m²
- Team:
Carlos Guillermo De Simón-Altuna,
Michael Salvi, Tiago Santana,
Andres Schenker, Katalin Tóth,
Thomas Weber, Merle Woköck

COOPERATION

- Statics:
Baumann + Obholzer Ziviltechniker
- Construction Management and Costs:
IIG - Immobiliengesellschaft der
Stadt Innsbruck
- Building Physics and Acoustics:
Spektrum - Zentrum für Umwelttechnik
- Building Services Engineering:
Elektrotechnische Planungsbüro
- HVAC Systems:
Technisches Büro Hermann Hofer
- Landscape Architect:
Barbara Bacher
- Photography:
Christoph Panzer
David Schreyer
Bengt Stiller