

Kundl Primary School

Invited Competition 2017
“Learning wherever you want”

Schenker

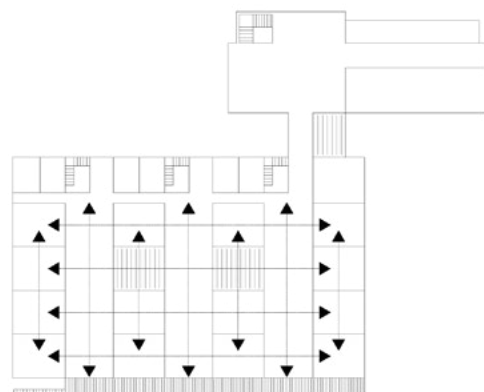
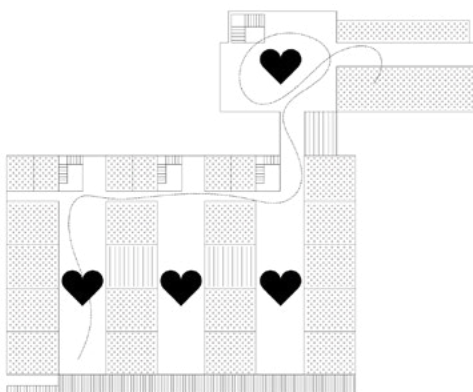
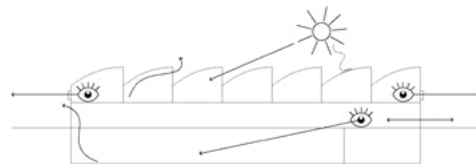


“Extension: The existing building from the 1970s is to be refurbished and enhanced with a new building and a gymnasium recessed in the terrain.”

Weber

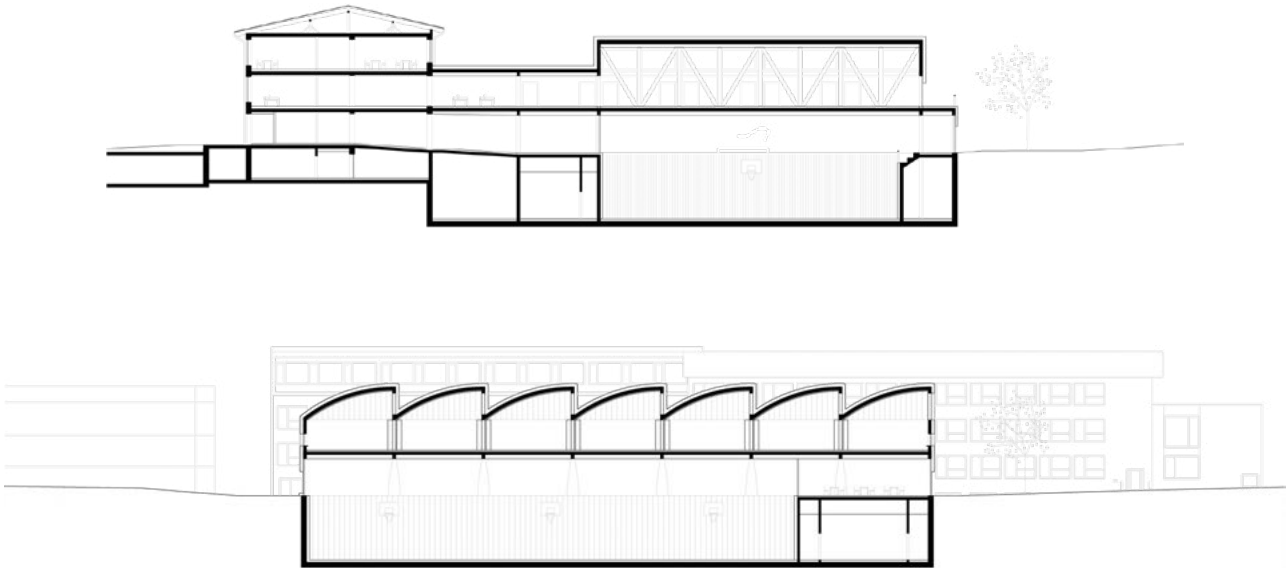


“Clear structure: Gymnasium in the basement, everything for everyone on the ground floor, and a learning landscape for the kids up above.”

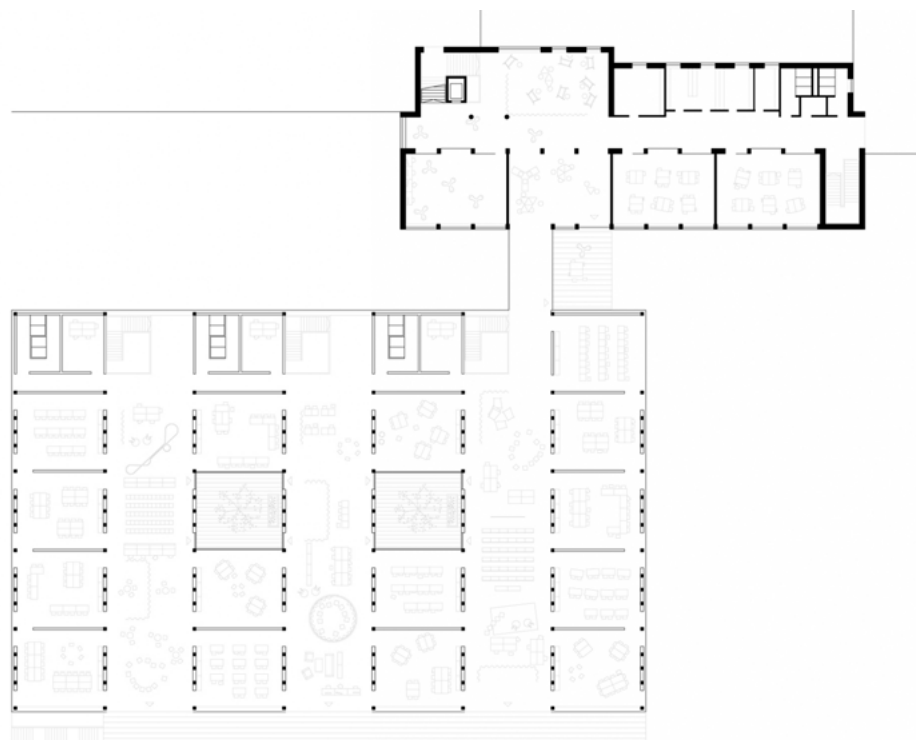


“Woven like a net: The learning landscape can be linked in all directions.”

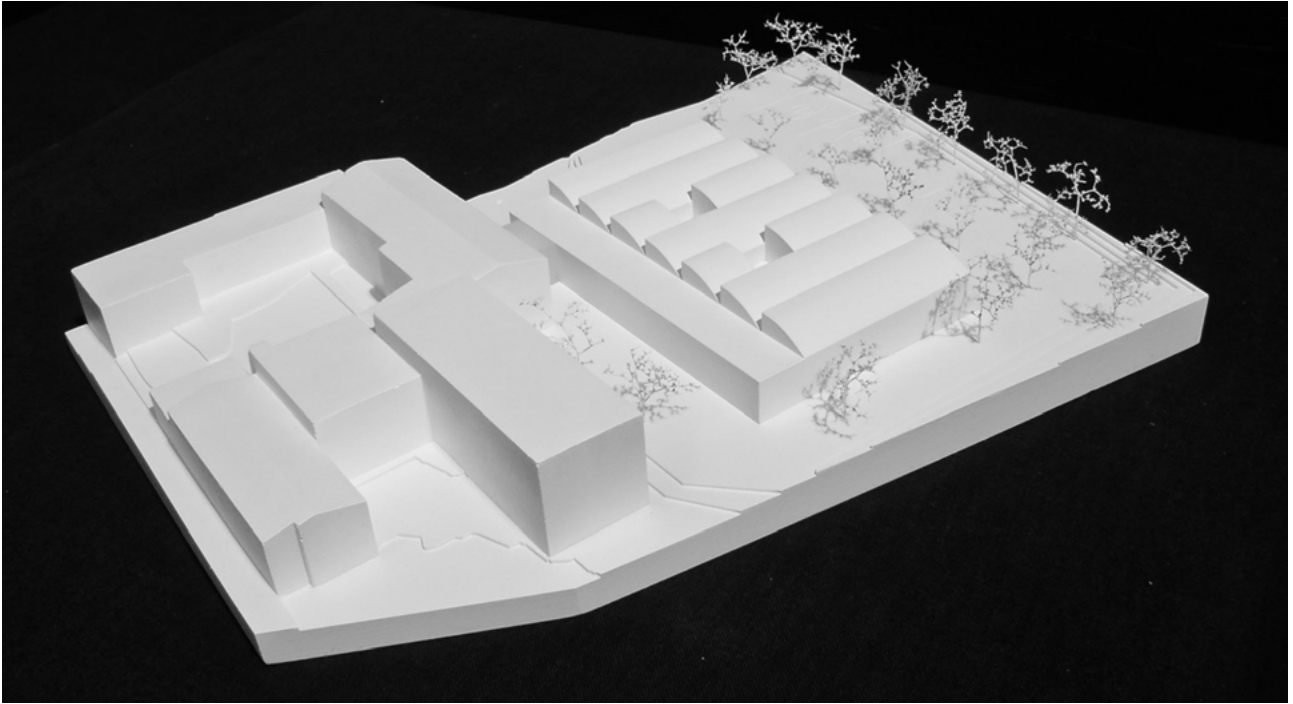
Schenker



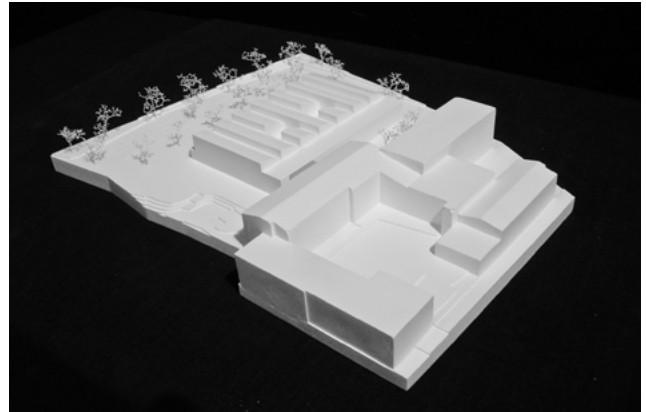
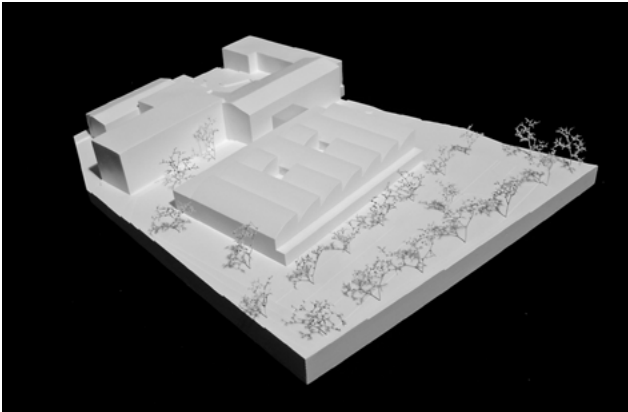
“Light on heavy: The elegant carrying structure – above with columns, below without – creates generous spaces and minimizes excavation work.”



Weber



Schenker



PROJECT DETAILS

- Commission Type:
Closed, one-stage competition in the upper threshold range
- Client:
Municipality of Kundl
- Location:
Kundl, AT
- Competition:
2017
- Status:
Closed
- GFA:
7870 m²
- Team:
Maxim Aubry, Peter Funke, Michael Salvi, Andres Schenker, Thomas Weber

COOPERATION

- Statics:
Gmeiner Haferl Bauingenieur
- Building Services Engineering:
Team GMI Ingenieurbüro
- Visualization:
Janusch
- Model Construction:
Modellbauwerkstatt Gerhard Stocker

Weber